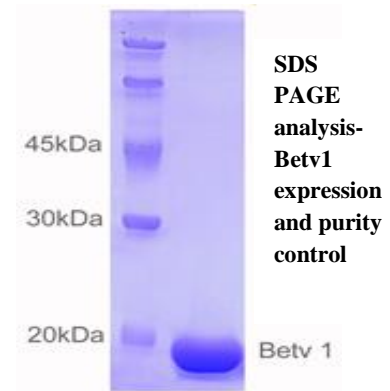


## Specification sheet

**Protein** **Betv 1a (PR-10 protein)**  
**REF** **17-100**



**Description** *E. coli* derived recombinant Birch pollen (*Betula verrucosa*),  
Protein Betv1 (pathogenesis-related protein, PR-10) - the major allergen of birch pollen- is responsible for more than 95% IgE-mediated cases of hypersensitivity among birch allergic patients; it contains His-tag and several additional amino acids

**Source** *E. coli* based on sequence P15494 (UniProt)

**Molecular weight**  $\approx$  17kDa

**Format** Purified, lyophilized

**Purification** Affinity FPLC

**Purity** > 98% (by SDS-PAGE)

**Units** 250 $\mu$ g, 500 $\mu$ g, 1mg

**Buffer** 20mM carbonate buffer

**Storage** Lyophilized material can be stored at -18...-22°C for several years, maintaining its antigenicity. During transportation may be kept at room temperature. After reconstitution should be aliquoted and stored at -18...-22°C or lower. Avoid repeated freezing/thawing.

**Reconstitution** Protein can be reconstituted with distilled water. Recommended final concentration is indicated in lot specification. Gentle agitation is essential for complete dissolution.

**Application** Research, immunological reactivity was tested on characterized human serums